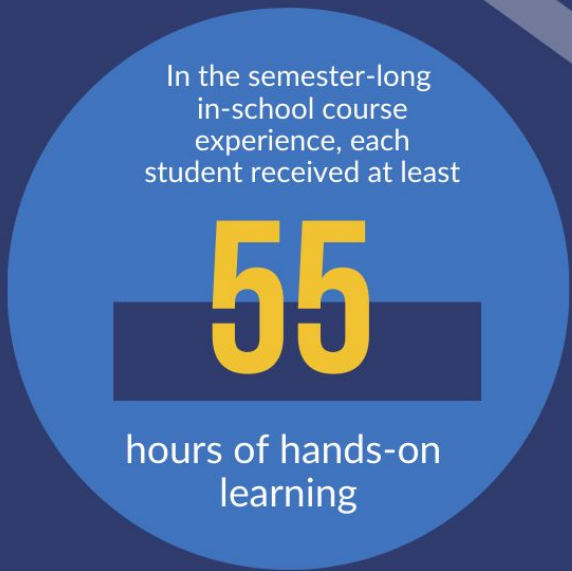
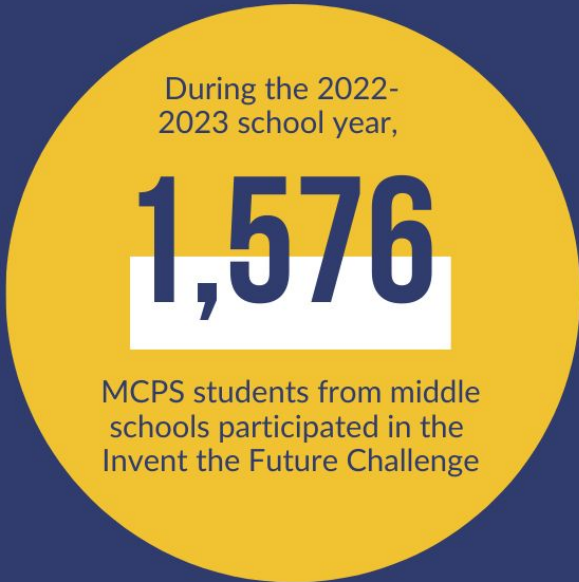
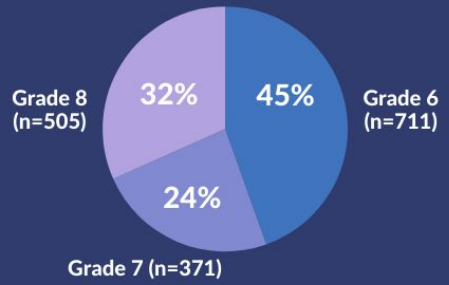


INVENT THE FUTURE 2022-2023 IMPACT



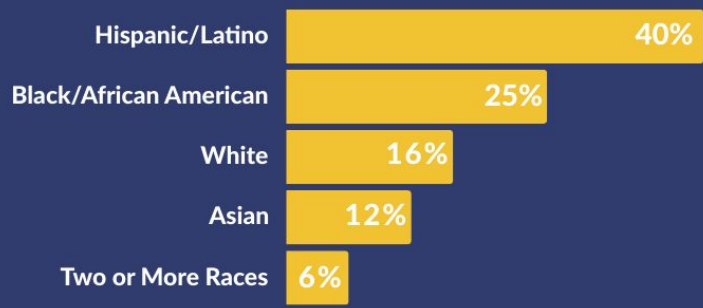
GRADE LEVEL



GENDER



RACE/ETHNICITY



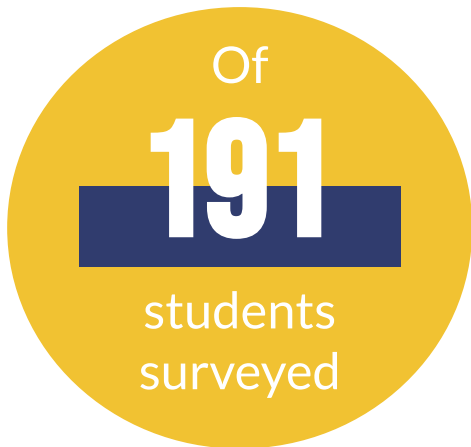
SERVICES RECEIVED



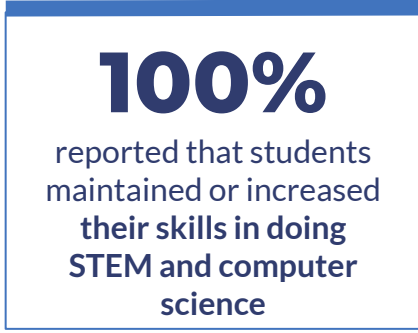
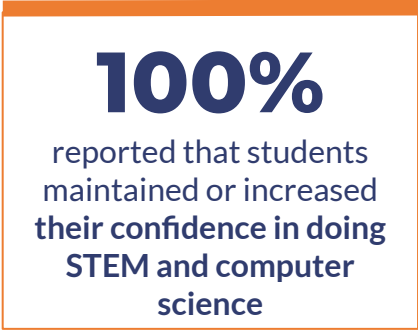
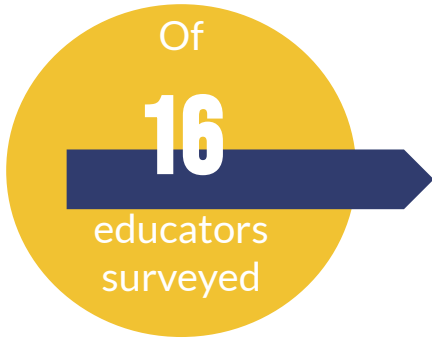
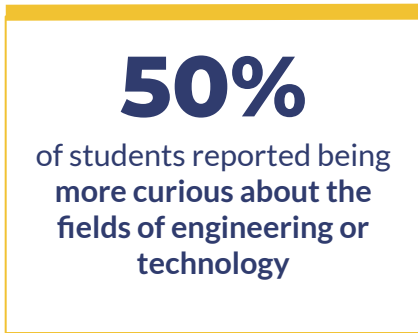
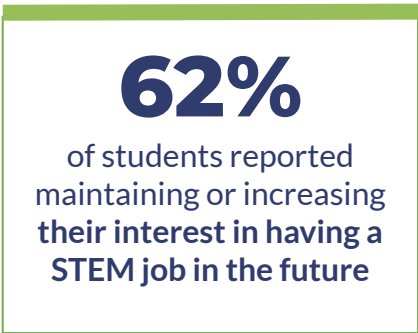
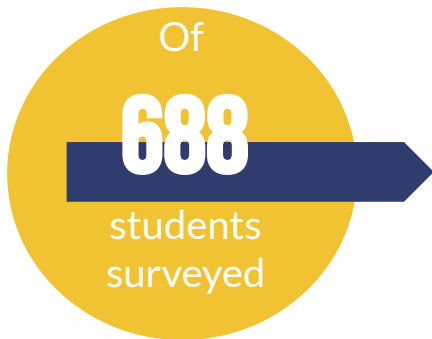
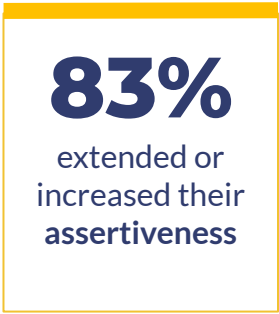
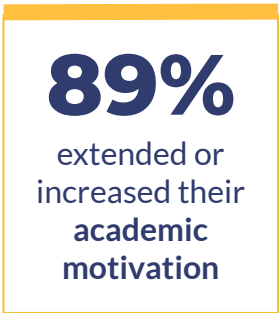
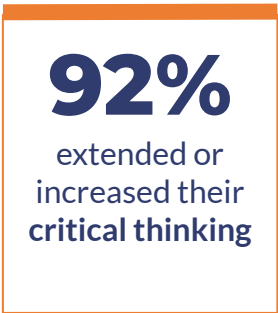
Based on data from Data Brief "2022-2023 Data Summary of Select KID Museum Programs at Montgomery County Public Schools" from the Montgomery County Public Schools Office of Shared Responsibility, Applied Research and Evaluation



Student Outcomes



PEAR Institute
Holistic Student Assessment



PEAR Institute
Common Instrument Suite



Teacher Outcomes

Of
16
 educators surveyed

On a scale from 1 (Strongly Disagree) to 4 (Strongly Agree):

↑.25 pts
 average increase in
 comfort leading STEM

↑.19 pts
 average increase in
 interest in leading STEM

↑.13 pts
 average increase in
 confidence leading STEM

↑.19 pts
 average increase in
 capability leading STEM

